



**P.O. Box 130 • 8430 HWY 10 Clear Lake, MN 55319**  
**[www.walksonwater.com](http://www.walksonwater.com)**  
**320-743-3333 • 866-456-DOCK (3625)**



**(dealer stamp area)**

**Proudly Built In America.**



**Proudly Built In America.**

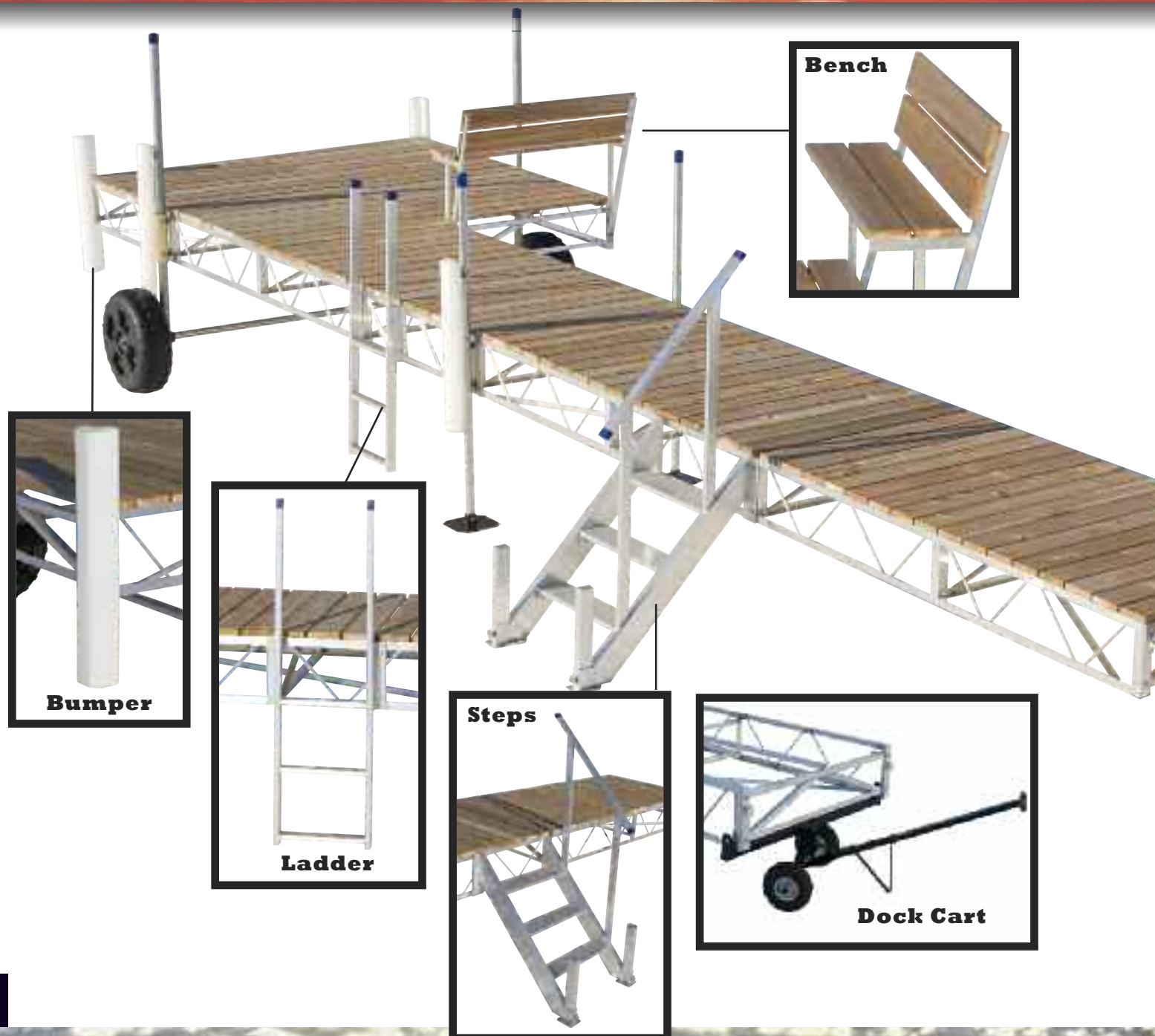


**Walks-On-Water Dock Company is a family-owned and operated business which has been building reasonably priced, quality docks at our Clear Lake, MN location since 1993. Our docks and lifts are proudly made right here in America. We have both roll-in and sectional dock styles in standard "packages" or we can custom design a dock to fit your individual needs.**

**Our roll-in and sectional docks are designed to be quickly and easily moved in and out of the water, eliminating the need for hours of work in many cases.**

**Installation and removal can be a one-person operation, taking little more than 10 to 15 minutes in most cases.**

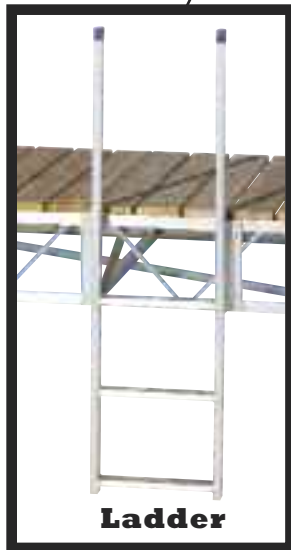
**We offer a complete line of accessories including floats, benches, ladders, gang planks, stairs, bumpers and tables and any custom items you may need to help you make the most of your new dock system.**



**Bench**



**Bumper**



**Ladder**



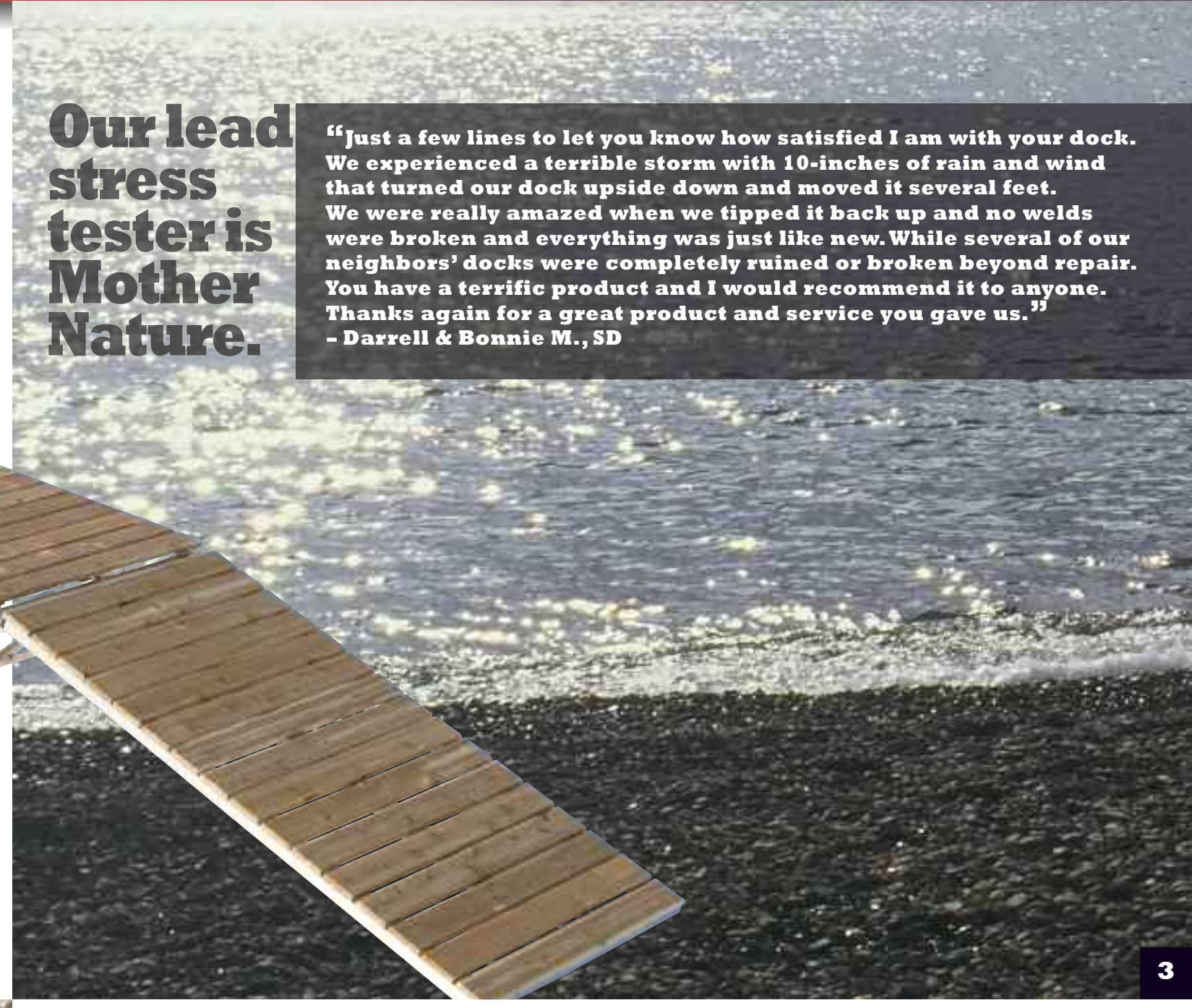
**Steps**



**Dock Cart**

**Our lead stress tester is Mother Nature.**

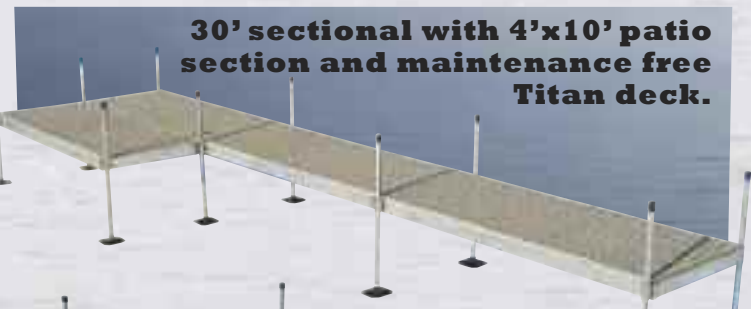
**"Just a few lines to let you know how satisfied I am with your dock. We experienced a terrible storm with 10-inches of rain and wind that turned our dock upside down and moved it several feet. We were really amazed when we tipped it back up and no welds were broken and everything was just like new. While several of our neighbors' docks were completely ruined or broken beyond repair. You have a terrific product and I would recommend it to anyone. Thanks again for a great product and service you gave us."**  
**- Darrell & Bonnie M., SD**







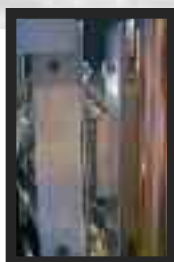
**32' solid side roll-in dock with patio and 2 wheel kits**



**30' sectional with 4'x10' patio section and maintenance free Titan deck.**



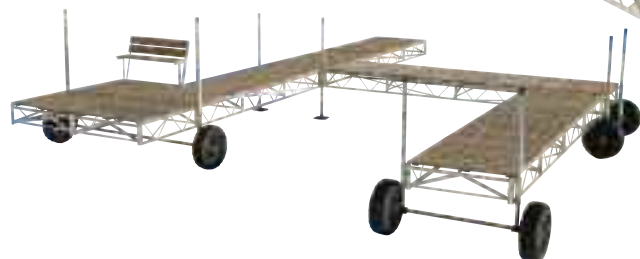
**32' truss style roll-in dock with patio and AquaDek decking.**



**Quick Connect joining 2 sections**

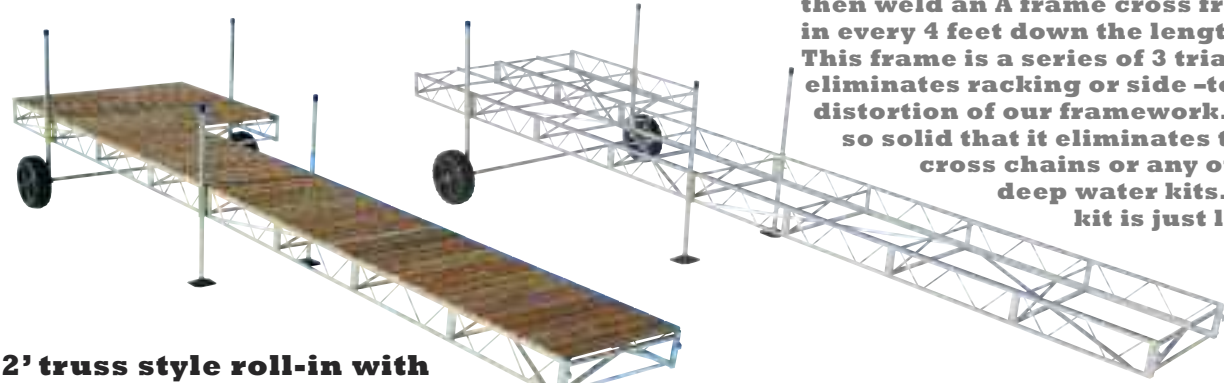


**Longer docks can be hooked together like this. 48' truss dock with cedar deck & 8' patio. The 16' shore section has a wheel kit and quick connect and can be detached for easier storage.**



**Our framework is lightweight and strong, getting none of its strength from bolted on decking. That makes it possible for one person to roll in this 32' dock and attach the 16'x16' slip and have it ready for decking in less than 10 minutes under normal conditions.**

We use a full 12" deep side frame on our residential docks. This deeper truss adds a great deal of strength without excessive weight. We then weld an A frame cross frame and bolt one in every 4 feet down the length of the dock. This frame is a series of 3 triangles that eliminates racking or side-to-side distortion of our framework. This system is so solid that it eliminates the need for cross chains or any other so-called deep water kits. Our deep water kit is just longer posts.



**32' truss style roll-in with patio, wheel kit and post kit. This is our most popular configuration.**

## It doesn't always take a custom set up. Sometimes it just seems that way.

**Building special projects can be as simple as bolting stock dock sections together in different ways. All it takes is a versatile design and some imagination.**

**"From the photos I sent, it might be hard to make out what we actually did but the 20' x 8' dock that you sold me is lag-bolted to a 12' x 9.5' rock crib, (which is built of 4 x 4 treated timbers) using a hinge mechanism that you designed and fabricated for this project.**

**I wanted to build a "draw bridge" type dock that did not require a lot of work every spring and fall putting it in and taking it out.**

**I can't remember when I have been more satisfied with a purchase. We are very happy with the look of the finished project and the dock itself has exceeded our expectations in every way. Everyone loves the Titan Deck surface and lifting the dock out of the water this fall was really a snap. Thanks again for working with me to build the dock that I have always wanted."**

**-Steve S., Cloquet, MN**



## Sometimes, it's an uphill battle.

**One of our customers needed a way to get his power wheelchair out to the pontoon he wanted to buy, but there was a steep drop of over 12' from the street to the water. Using stock sections and longer posts we built a dock that sloped from the edge of the pavement to the level dock by his pontoon, making it possible for him to get out on the water for the first time in years.**





# Tough Boat Lifts that won't require a weightlifter to move in and out of the water.

We have boat and pontoon lifts ranging from 1000 lbs. to 5000 lbs. capacity, with widths up to 115 inches. All our lifts are available with some of the most popular options such as electric winches, wheel kits, motor stops and full rails. Our canopies are extra deep to provide more protection from sun and rain and come in a variety of popular colors.

## Why W.O.W.?

All of our 2000 lb capacity and above lifts come standard with Lorenz custom-built, chain drive, gear reduction winches with aluminum wheels. We also have several different electric winches in 110v and 12v available.



Our canopies are extra deep to keep rain and wind-blown debris out of your boat.

3000lb.-108"wide boat lift.

1000lb. - 72" PWC Lift with Canopy

2000lb. - 108" Double PWC Lift

3000 lb. capacity lift shown with some of our add-on features like Dutton-Lainson electric winch, full length bunks, motor stop and optional 24" wheel kit.